

# **SLC Series Vertical Pump**

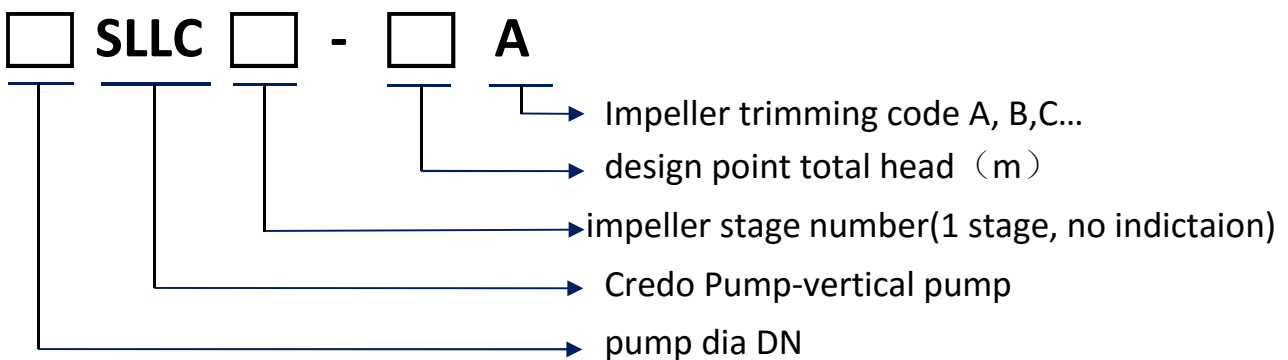


---

## GENERAL DESCRIPTION

SLLC vertical pump is a newly developed product with both homeland and overseas advanced experience in design and manufacture. It is used to deliver clear water, sewage with certain solid water and seawater with corrosive. The temperature of liquid can not be above 80 °C. It is widely used in original water works, waste water factory, metallurgy and steel industry(especially suitable for delivering oxygenation iron sheet water in swirl pool, power station, mine, civil project and farmland etc.

## MODEL INSTRUCTION



EXAMPLE: 500SLLC2-60A

500: pump outlet dia DN500 SLLC:

Credo Pump-vertical pump 2:

impeller stages -2 stages 60: design

point total head 60 (m) A:

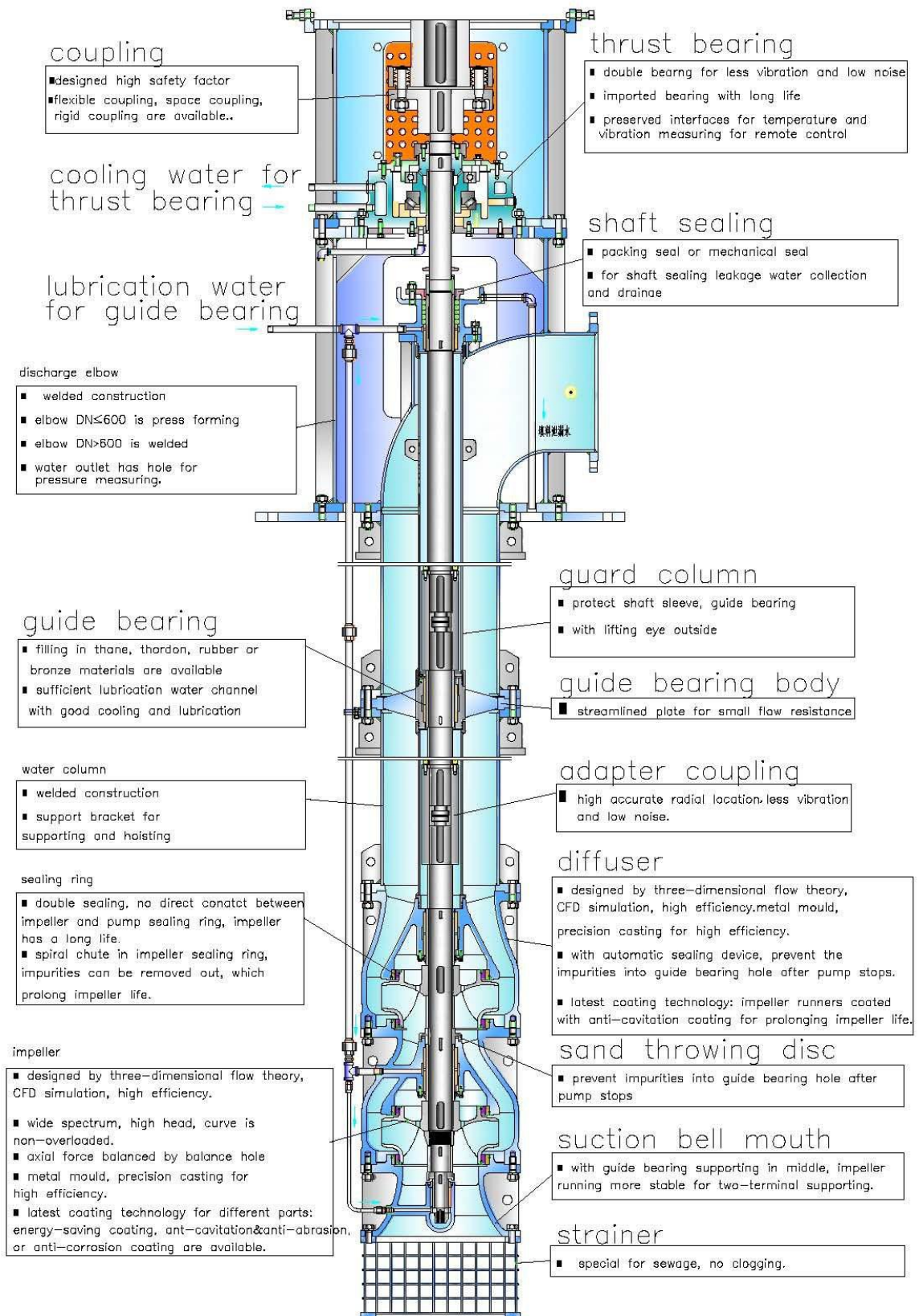
Impeller trimming code A, B,C...

## MATERIALS OF MAIN PARTS

Pumped Medium Material Sort Part Name	Clear Water	Sewage	Seawater	
	I	II	III	IV
Bell Mouth	HT250	HT250	HT250Ni2Cr	ZG00Cr17Ni14Mo2
Impeller	HT250	ZG1Cr13Ni1/ ZG1Cr18Ni9	ZG00Cr17Ni14Mo2	ZG00Cr17Ni14Mo2
Diffuser	HT250	QT500-7	HT250Ni2Cr	ZG00Cr17Ni14Mo2
Water Column	Q235-A	Q235-A	HT250Ni2Cr	ZG00Cr17Ni14Mo2
Discharge Elbow	Q235-A	Q235-A	HT250Ni2Cr	ZG00Cr17Ni14Mo2
Guard Column	Q235-A	Q235-A	1Cr18Ni9Ti	00Cr17Ni14Mo2
Shaft	45#steel/2Cr13	5#steel/2Cr13	1Cr18Ni9Ti	1Cr18Ni9Ti
Shaft Sleeve	2Cr13	2Cr13	1Cr17Ni2	1Cr17Ni2
Guide Bearing	Filling in ethane or Thordon			
Guide Bearing Body	HT250	HT250	HT250Ni2Cr	ZG00Cr17Ni14Mo2
Sealing Ring	HT250	2Cr13	HT250Ni2Cr	ZG00Cr17Ni14Mo2
Adapter Coupling	45#steel/2Cr13	45#steel/2Cr13	1Cr17Ni2	1Cr17Ni2
Coupling	HT250	HT250	HT250	HT250
Motor Support	Q235-A	Q235-A	Q235-A	Q235-A

Remark: other materials can be by customer's request.

## CONSTRUCTOIN DRAWING 1



## CONSTRUCTOIN DRAWING 2

### coupling

- designed high safety factor
- flexible coupling, space coupling, rigid coupling are available..

cooling water for thrust bearing

### discharge elbow

- welded construction
- elbow  $DN \leq 600$  is press forming
- elbow  $DN > 600$  is welded
- water outlet has hole for pressure measuring.

### thrust bearing

- double bearing for less vibration and low noise
- imported bearing with long life
- preserved interfaces for temperature and vibration measuring for remote control

### shaft sealing

- packing seal or mechanical seal
- for shaft sealing leakage water collection and drainage

### guide bearing

- filling in thane, thordon, rubber or bronze materials are available
- sufficient lubrication water channel with good cooling and lubrication

### water column

- welded construction
- support bracket for supporting and hoisting

### guide bearing body

- streamlined plate for small flow resistance

### adapter coupling

- high accurate radial location, less vibration and low noise.

### impeller

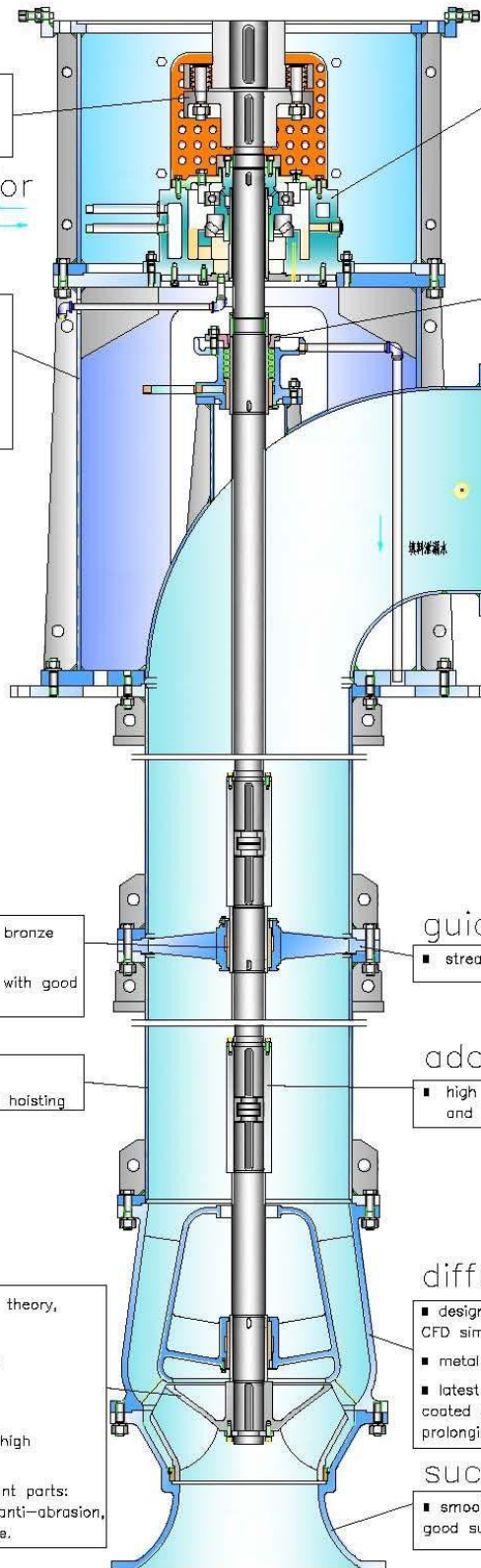
- designed by three-dimensional flow theory, CFD simulation, high efficiency.
- wide spectrum, high head, curve is non-overloaded.
- closed and semi-closed impeller
- metal mould, precision casting for high efficiency.
- latest coating technology for different parts: energy-saving coating, anti-cavitation & anti-abrasion, or anti-corrosion coating are available.

### diffuser

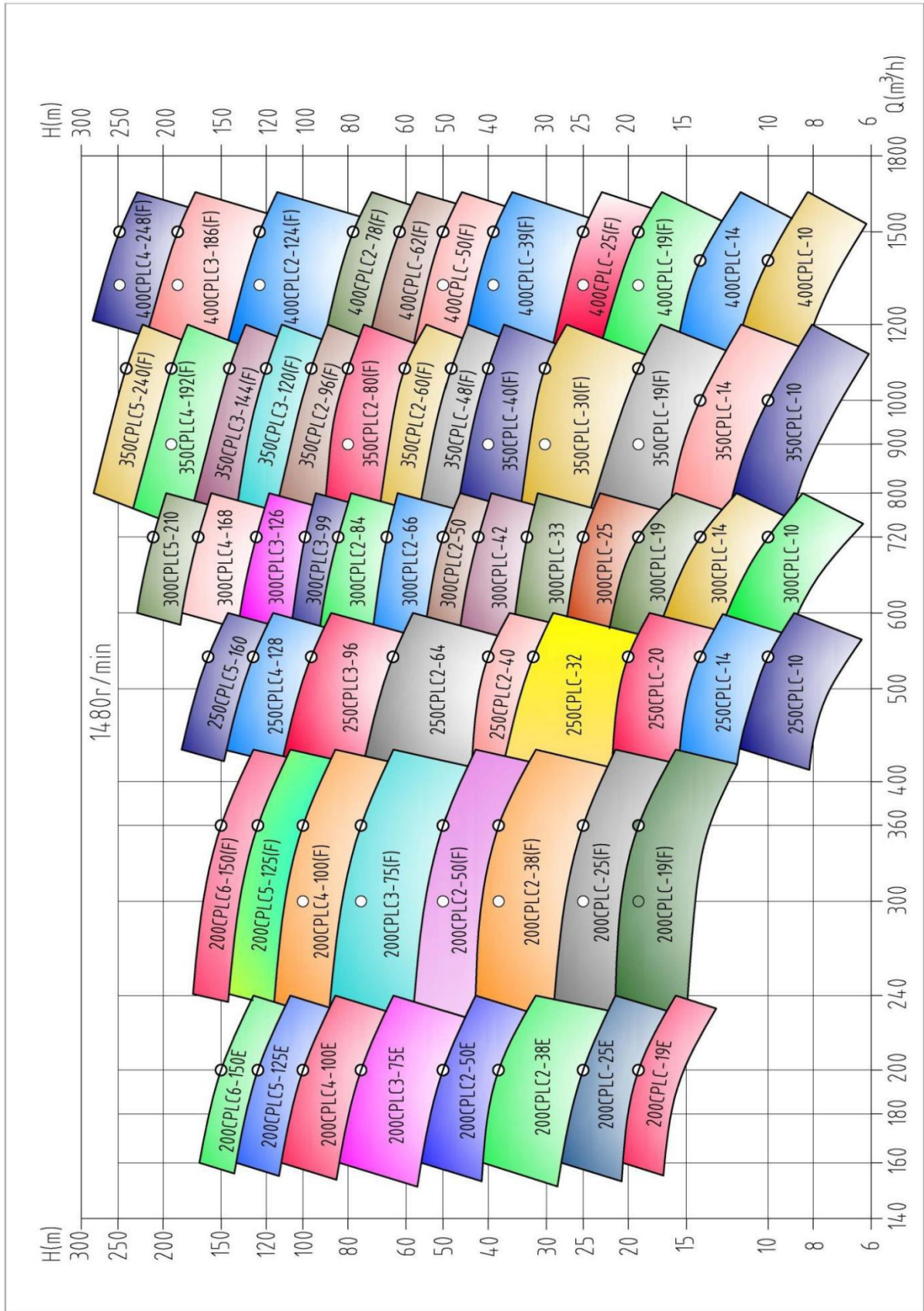
- designed by three-dimensional flow theory, CFD simulation, high efficiency.
- metal mould, precision casting for high efficiency.
- latest coating technology: impeller runners coated with anti-cavitation coating for prolonging impeller life.

### suction bell mouth

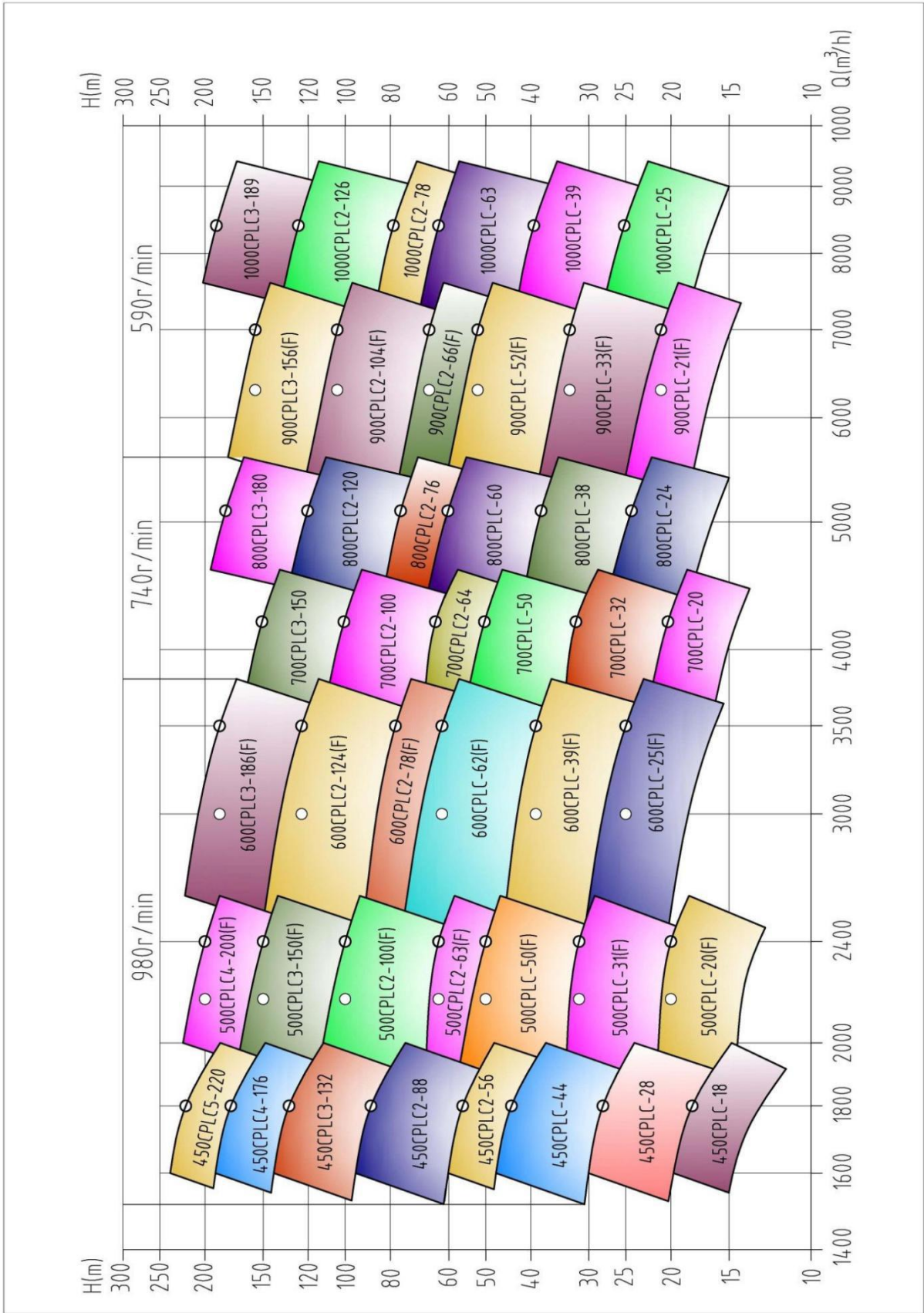
- smoothy runner, low flowing speed, good suction.



# SPECTRUM 1



# SPECTRUM 2



# PERFORMANCE DATA

Chart 1

parameter Model no	Flow Q		Head H m	Speed n r/min	Shaft Power Pa kW	Motor		Eff. $\eta$ %	Pump Weight kg
	m <sup>3</sup> /h	l/s				Power kW	Model no		
200SLLC-19E	160	44.4	20.5	1480	12.2	18.5	Y160L-4	73	900+170N
	200	55.6	19		13.4			77.5	
	240	66.7	15.8		14.2			73	
200SLLC-25E	160	44.4	27.8	1480	16.6	30	Y200L-4	73	900+170N
	200	55.6	25		17.6			77.5	
	240	66.7	21.3		18.8			74	
200SLLC2-38E	160	44.4	41	1480	24.5	37	Y225S-4	73	1020+170N
	200	55.6	38		26.7			77.5	
	240	66.7	31.6		28.3			73	
200SLLC2-50E	160	44.4	55.6	1480	33.2	45	Y225M-4	73	1020+170N
	200	55.6	50		35.2			77.5	
	240	66.7	42.6		37.6			74	
200SLLC3-75E	160	44.4	83.4	1480	49.8	75	Y280S-4	73	1140+170N
	200	55.6	75		52.7			77.5	
	240	66.7	63.9		56.5			74	
200SLLC4-100E	160	44.4	111.2	1480	66.4	90	Y280M-4	73	1300+180N
	200	55.6	100		70.3			77.5	
	240	66.7	85.2		75.3			74	
200SLLC5-125E	160	44.4	139	1480	83.0	110	Y315S-4	73	1450+180N
	200	55.6	125		87.9			77.5	
	240	66.7	106.5		94.1			74	
200SLLC6-150E	160	44.4	166.8	1480	99.6	132	Y315M-4	73	1600+180N
	200	55.6	150		105.5			77.5	
	240	66.7	127.8		113.0			74	
200SLLC-19	240	66.7	20.5	1480	18.4	30	Y200L-4	73	900+170N
	300	83.3	19		19.9			78	
	360	100	15.8		21.2			73	
200SLLC-19A	240	66.7	16.6	1480	14.9	22	Y180L-4	73	900+170N
	300	83.3	14.5		15.4			77	
	360	100	11.9		16.2			72	
200SLLC-19F	280	77.8	20.8	1480	21.47	37	Y225S-4	73	900+170N
	360	100	19		23.9			78	
	432	120	15.8		25.5			73	
200SLLC-19FA	280	77.8	16.8	1480	17.8	30	Y200L-4	72	900+170N
	360	100	14.5		18.5			77	



	432	120	11.9		19.2			73	
200SLLC-25	240	66.7	27.8	1480	24.9	37	Y225S-4	73	900+170N
	300	83.3	25		26.2			78	
	360	100	21.3		28.2			74	

Chart 2

parameter Model NO	Flow Q		Head H m	Speed n r/min	Shaft Power Pa kW	Motor		Eff. η	Pump Weight m³/h
	m³/h	l/s				Power P kW	Model no		
200SLLC-25F	280	77.8	27.8	1480	29.1	45	Y225M-4	73	900+170N
	360	100	25		31.4			78	
	432	120	21.3		33.9			74	
200SLLC2-38	240	66.7	41	1480	36.7	55	Y250M-4	73	1020+170N
	300	83.3	38		39.8			78	
	360	100	31.6		42.5			73	
200SLLC2-38F	280	77.8	41.6	1480	43.5	75	Y280S-4	73	1020+170N
	360	100	38		47.8			78	
	432	120	31.6		51.0			73	
200SLLC2-50	240	66.7	55.6	1480	49.8	75	Y280S-4	73	1020+170N
	300	83.3	50		52.4			78	
	360	100	42.6		56.5			74	
200SLLC2-50F	280	77.8	55.6	1480	58.1	90	Y280M-4	73	1020+170N
	360	100	50		62.9			78	
	432	120	42.6		67.8			74	
200SLLC3-75	240	66.7	83.4	1480	74.7	110	Y315S-4	73	1140+170N
	300	83.3	75		78.6			78	
	360	100	63.9		84.7			74	
200SLLC3-75F	280	77.8	83.4	1480	87.2	132	Y315M-4	73	1140+170N
	360	100	75		94.3			78	
	432	120	63.9		101.7			74	
200SLLC4-100	240	66.7	111.2	1480	99.6	132	Y315M-4	73	1300+180N
	300	83.3	100		104.8			78	
	360	100	85.2		113.0			74	
200SLLC4-100F	280	77.8	111.2	1480	116.2	160	Y315L1-4	73	1300+180N
	360	100	100		125.8			78	
	432	120	85.2		135.5			74	
200SLLC5-125	240	66.7	139	1480	124.5	160	Y315L1-4	73	1450+180N
	300	83.3	125		131.0			78	
	360	100	106.5		141.2			74	
200SLLC5-125F	280	77.8	139	1480	145.3	200	Y315L2-4	73	1450+180N
	360	100	125		157.2			78	
	432	120	106.5		169.4			74	

200SLLC6-150	240	66.7	166.8	1480	149.3	200	Y315L2-4	73	1600+180N
	300	83.3	150		157.2			78	
	360	100	127.8		169.4			74	
200SLLC6-150F	280	77.8	166.8	1480	174.3	250	Y355M2-4	73	1600+180N
	360	100	150		188.7			78	
	432	120	127.8		203.3			74	

Chart 3

Parameter Model NO	Flow Q		Head H m	Speed n r/min	Shaft Power Pa kW	Motor		Eff. $\eta$ %	Pump Weight kg
	m <sup>3</sup> /h	l/s				Power P kW	Model NO		
250SLLC-10	432	120	11.5	1480	17.8	30	Y200L-4	76	1200+250N
	540	150	10		18.4			80	
	600	166.7	8.9		18.9			77	
250SLLC-14	432	120	15.8	1480	24.5	37	Y225S-4	76	1200+250N
	540	150	14		25.4			81	
	600	166.7	12.7		27.0			77	
250SLLC-20	432	120	21.6	1480	33.0	45	Y225M-4	77	1200+250N
	540	150	20		36.8			80	
	600	166.7	18		37.7			78	
250SLLC-20A	360	100	15.0	1480	19.6	30	Y200L-4	75	1200+250N
	450	125	13.9		21.6			79	
	500	138.9	12.5		22.4			76	
250SLLC-32	432	120	35	1480	52.8	75	Y280S-4	78	1280+250N
	540	150	32		58.9			80	
	600	166.7	30		63.7			77	
250SLLC-32A	360	100	24.3	1480	31.0	55	Y250M-4	77	1280+250N
	450	125	22.2		34.5			79	
	500	138.9	20.8		37.3			76	
250SLLC2-40	432	120	43.2	1480	66.0	90	Y280M-4	77	1400+250N
	540	150	40		73.6			80	
	600	166.7	36		75.5			78	
250SLLC2-64	432	120	70	1480	105.7	160	Y315L1-4	78	1500+250N
	540	150	64		117.7			80	
	600	166.7	60		127.4			77	
250SLLC2-64A	360	100	48.6	1480	61.9	90	Y280M-4	77	1500+250N
	450	125	44.4		69.0			79	
	500	138.9	41.7		74.7			76	
250SLLC3-96	432	120	105	1480	158.5	220	Y355M1-4	78	1720+250N
	540	150	96		176.6			80	
	600	166.7	90		191.1			77	

250SLLC3-96A	360	100	72.9	1480	92.9	132	Y315M-4	77	1720+250N
	450	125	66.7		103.5			79	
	500	138.9	62.5		112.1			76	
250SLLC4-128	432	120	140	1480	211.3	280	Y355L1-4	78	1940+250N
	540	150	128		235.4			80	
	600	166.7	120		254.8			77	
250SLLC4-128A	360	100	97.2	1480	123.9	185	Y315L2-4	77	1940+250N
	450	125	88.9		138.0			79	
	500	138.9	83.3		149.4			76	

Chart 4

Parameter Model NO	Flow Q		Head H	Speed n	Shaft Power Pa	Motor		Eff. $\eta$	Pump Weight
	m <sup>3</sup> /h	l/s				kW	Model NO		
			%	kg					
250SLLC5-160	432	120	175	1480	264.1	355	YLS355-4	78	2160+250N
	540	150	160		294.3			80	
	600	166.7	150		318.5			77	
300SLLC-10	600	166.7	14.3	1480	29.6	37	Y225S-4	79	1250+260N
	720	200	10		24.1			81.5	
	800	222.2	7.2		20.7			76	
300SLLC-14	600	166.7	17.8	1480	36.8	45	Y225M-4	79	1250+260N
	720	200	14		33.7			81.5	
	800	222.2	10.5		30.1			76	
300SLLC-19	600	166.7	21.6	1480	44.7	55	Y250M-4	79	1320+270N
	720	200	19		45.8			81.5	
	800	222.2	16.4		47.0			76	
300SLLC-19A	540	150	17.6	1480	33.6	45	Y225M-4	77	1320+270N
	650	180.6	15.5		34.3			80	
	720	200	13.4		35.1			75	
300SLLC-25	600	166.7	27	1480	55.2	75	Y280S-4	80	1340+270N
	720	200	25		60.6			81	
	800	222.2	23		63.1			79.5	
300SLLC-25A	540	150	22.0	1480	42.6	55	Y250M-4	76	1340+270N
	650	180.6	20.4		45.2			80	
	720	200	18.8		48.5			76	
300SLLC-33	600	166.7	35	1480	75.3	110	Y315S-4	76	1400+270N
	720	200	33		79.9			81	
	800	222.2	31.3		86.4			79	
300SLLC-42	600	166.7	45.5	1480	96.6	132	Y315M-4	77	1480+270N
	720	200	42		101.7			81	
	800	222.2	39.4		110.1			78	
300SLLC-42A	540	150	37.1	1480	71.8	90	Y280M-4	76	1480+270N
	650	180.6	34.2		75.7			80	

	720	200	32.0		81.5			77	
300SLLC2-50	600	166.7	54	1480	110.4	160	Y315L1-4	80	1580+270N
	720	200	50		121.1			81	
	800	222.2	46		126.1			79.5	
300SLLC2-66	600	166.7	70	1480	150.6	220	Y355M1-4	76	1650+270N
	720	200	66		159.9			81	
	800	222.2	62.6		172.7			79	
300SLLC2-84	600	166.7	91	1480	193.2	250	Y355M2-4	77	1780+270N
	720	200	84		203.5			81	
	800	222.2	78.8		220.2			78	

Chart 5

Parameter Model NO	Flow Q		Head H	Speed n	Shaft Power Pa	Motor		Eff. $\eta$	Pump Weight
	m <sup>3</sup> /h	l/s				kW	Model NO		
					%			kg	
300SLLC3-99	600	166.7	105	1480	225.9	315	Y355L2-4	76	2000+300N
	720	200	99		239.8			81	
	800	222.2	93.9		259.1			79	
300SLLC3-126	600	166.7	136.5	1480	289.8	355	YLS355-4	77	2400+300N
	720	200	126		305.2			81	
	800	222.2	118.2		330.4			78	
300SLLC4-168	600	166.7	182	1480	386.5	500	YLS400-4	77	2800+350N
	720	200	168		406.9			81	
	800	222.2	157.6		440.5			78	
300SLLC5-210	600	166.7	227.5	1480	483.1	630	YLS400-4	77	3200+350N
	720	200	210		508.7			81	
	800	222.2	197		550.6			78	
350SLLC-10	800	222.2	12.2	1480	35.5	45	Y225M-4	75	1520+270N
	1000	277.8	10		33.4			81.5	
	1200	333.3	7.0		29.4			78	
350SLLC-14	800	222.2	16.3	1480	47.4	55	Y250M-4	75	1520+270N
	1000	277.8	14		46.8			81.5	
	1200	333.3	10.0		43.0			76	
350SLLC-19	800	222.2	20.3	1480	56.7	75	Y280S-4	78	1540+270N
	900	250	19		57.5			81	
	1050	291.7	16.1		60.6			76	
350SLLC-19F	960	266.7	21.5	1480	72.1	90	Y280M-4	78	1540+270N
	1080	300	19		69.0			81	
	1260	350	16.5		74.5			76	
350SLLC-30	800	222.2	32	1480	87.2	132	Y315M-4	80	1650+320N
	900	250	30.2		89.8			82.5	
	1050	291.7	27		101.6			76	
350SLLC-30A	713	198.1	30.2	1480	76.2			77	

	850 998	236.1 272.2	27.3 23		77.6 83.4	110	Y315S-4	81.5 75	1650+320N
350SLLC-30B	675 810 945	187.5 225 262.5	27.4 24.5 20.7	1480	65.9 66.8 71.1	90	Y280M-4	76.5 81 75	1650+320N
350SLLC-30F	960 1080 1260	266.7 300 350	32 30.2 27	1480	104.6 107.7 122.0	160	Y315L1-4	80 82.5 76	1650+320N
350SLLC-40	800 900 1050	222.2 250 291.7	42.8 40 36.7	1480	115.2 119.6 132.9	160	Y315L1-4	81 82 79	1700+320N

Chart 6

Parameter Model NO	Flow Q		Head H	Speed n	Shaft Power Pa	Motor		Eff. $\eta$	Pump Weight
	m <sup>3</sup> /h	l/s				Power P	Model NO		
			kW	kW	%			kg	
350SLLC-40A	708 850 992	196.7 236.1 275.6	38.4 35.7 31.8	1480	92.6 102.1 108.8	132	Y315M-4	80 81 79	1700+320N
350SLLC-40F	960 1080 1260	266.7 300 350	42.8 40 36.7	1480	138.2 143.6 159.5	200	Y315L2-4	81 82 79	1700+320N
350SLLC-48	800 900 1050	222.2 250 291.7	51.4 48 42.5	1480	140.1 144.4 153.0	200	Y315L2-4	80 81.5 79.5	1850+320N
350SLLC-48A	708 850 992	196.7 236.1 275.6	46.7 43.2 38.4	1480	114.1 124.3 132.3	160	Y315L1-4	79 80.5 78.5	1850+320N
350SLLC-48F	960 1080 1260	266.7 300 350	51.4 48 42.5	1480	168.1 173.3 183.6	220	Y355M1-4	80 81.5 79.5	1850+320N
350SLLC2-60	800 900 1050	222.2 250 291.7	64 60.4 51	1480	176.6 180.6 194.6	250	Y355M2-4	79 82 75	1920+320N
350SLLC2-60F	960 1080 1260	266.7 300 350	64 60.4 54	1480	209.3 215.5 244.0	280	Y355L1-4	80 82.5 76	1920+320N
350SLLC2-80	800 900 1050	222.2 250 291.7	85.6 80 73.4	1480	230.4 239.3 265.8	315	Y355L2-4	81 82 79	1970+320N

350SLLC2-80F	960	266.7	85.6	1480	276.5	355	YLS355-4	81	1970+320N
	1080	300	80		287.1			82	
	1260	350	73.4		319.0			79	
350SLLC2-96	800	222.2	103.1	1480	284.5	355	YLS355-4	79	2200+350N
	900	250	96		290.7			81	
	1050	291.7	85		309.9			78.5	
350SLLC2-96A	708	196.7	93.4	1480	229.6	315	Y355L2-4	78.5	2200+350N
	850	236.1	86.4		250.1			80	
	992	275.6	76.8		266.2			78	
350SLLC2-96F	960	266.7	102.8	1480	336.2	400	YLS400-4	80	2200+350N
	1080	300	96		346.7			81.5	
	1260	350	85		367.1			79.5	
350SLLC3-120	800	222.2	128	1480	344.5	450	YLS400-4	81	2500+350N
	900	250	120		358.9			82	
	1050	291.7	106.8		382.0			80	

Chart 7

Parameter Model NO	Flow Q		Head H	Speed n	Shaft Power Pa	Motor		Eff. $\eta$	Pump Weight
	m <sup>3</sup> /h	l/s	m	r/min	kW	Power P	Model NO	%	kg
						kW			
350SLLC3-120F	960	266.7	128	1480	387.6	500	YLS400-4	81	2500+350N
	1080	300	120		430.7			82	
	1260	350	106.8		436.5			80	
350SLLC3-144	800	222.2	154.8	1480	421.8	560	YLS400-4	80	2600+350N
	900	250	144		433.3			81.5	
	1050	291.7	127.5		458.9			79.5	
350SLLC3-144F	960	266.7	154.2	1480	504.2	630	YLS400-4	80	2600+350N
	1080	300	144		520.0			81.5	
	1260	350	127.5		550.7			79.5	
350SLLC4-192	800	222.2	205.6	1480	567.3	710	YLS450-4	79	3100+400N
	900	250	192		581.3			81	
	1050	291.7	170		619.7			78.5	
350SLLC4-192F	960	266.7	205.6	1480	672.3	800	YLS450-4	80	3100+400N
	1080	300	192		693.3			81.5	
	1260	350	170		734.2			79.5	
350SLLC5-240	800	222.2	257	1480	700.3	900	YLS450-4	80	3600+400N
	900	250	240		722.2			81.5	
	1050	291.7	212.5		764.9			79.5	
350SLLC5-240F	960	266.7	257	1480	840.4	1000	YLS450-4	80	3600+400N
	1080	300	240		866.7			81.5	
	1260	350	212.5		917.8			79.5	
400SLLC-10	1200	333.3	13.2	1480	54.3	75	Y280S-4	79.5	2100+350N
	1400	388.9	10		46.5			82	

	1600	444.4	7.4		41.9			77	
400SLLC-14	1200	333.3	18.5		76.6			79	2100+350N
	1400	388.9	14	1480	65.1	90	Y280M-4	82	
	1600	444.4	10.6		60.0			77	
400SLLC-19	1050	291.7	22.4		82.2			78	2150+380N
	1320	366.7	19	1480	83.3	110	Y315S-4	82	
	1500	416.7	16.2		86.0			77	
400SLLC-19A	1000	277.8	20		70.8			77	2150+380N
	1250	347.2	17	1480	71.5	90	Y280M-4	81	
	1430	397.2	14.3		73.3			76	
400SLLC-19F	1200	333.3	22.4		93.9			78	2150+380N
	1500	416.7	19	1480	94.7	132	Y315M-4	82	
	1700	472.2	16.2		97.5			77	
400SLLC-25	1050	291.7	28.3		103.8			78	2170+380N
	1320	366.7	25	1480	107.7	160	Y315L1-4	83.5	
	1500	416.7	22		113.8			79	

Chart 8

Parameter Model NO	Flow Q		Head H	Speed n	Shaft Power Pa	Motor		Eff. $\eta$	Pump Weight
	m <sup>3</sup> /h	l/s				r/min	kW		
400SLLC-25A	1000	277.8	25.2		89.2			77	2170+380N
	1250	347.2	23	1480	95.0	132	Y315M-4	82.5	
	1430	397.2	19.6		97.9			78	
400SLLC-25F	1200	333.3	28.3		118.6			78	2170+380N
	1500	416.7	25	1480	122.4	160	Y315L1-4	83.5	
	1700	472.2	22		129.0			79	
400SLLC-25F1	1200	333.3	32		134.2			78	2170+380N
	1500	416.7	28.5	1480	140.4	185	Y315L2-4	83	
	1700	472.2	25		152.4			76	
400SLLC-39	1050	291.7	44.3		162.5			78	2280+380N
	1320	366.7	39	1480	169.0	250	Y355M2-4	83	
	1500	416.7	34.3		182.1			77	
400SLLC-39A	1000	277.8	39.6		140.1			77	2280+380N
	1250	347.2	35	1480	145.4	200	Y315L2-4	82	
	1430	397.2	30.7		157.4			76	
400SLLC-39B	955	265.3	36.6		125.3			76	2280+380N
	1200	333.3	32.2	1480	130.0	160	Y315L1-4	81	
	1364	378.9	28.4		140.7			75	
400SLLC-39F	1200	333.3	44.3		185.7			78	2280+380N
	1500	416.7	39	1480	192.1	250	Y355M2-4	83	
	1700	472.2	34.3		206.3			77	
400SLLC2-50	1050	291.7	56.6	1480	210.3			77	

	1320 1500	366.7 416.7	50 44		216.7 230.6	280	Y355L1-4	83 78	2520+380N
400SLLC2-50A	1000	277.8	50.7	1480	180.6	250	Y355M2-4	76.5	2520+380N
	1250	347.2	44.8		186.1			82	
	1430	397.2	39.8		201.4			77	
400SLLC2-50F	1200	333.3	56.6	1480	240.4	315	Y355L2-4	77	2520+380N
	1500	416.7	50		246.2			83	
	1700	472.2	44		261.3			78	
400SLLC-62	1050	291.7	71.2	1480	251.5	355	YLS355-4	81	2650+400N
	1320	366.7	62		272.0			82	
	1500	416.7	55		292.0			77	
400SLLC-62A	1000	277.8	63.7	1480	217.0	315	Y355L2-4	80	2650+400N
	1250	347.2	55.6		232.4			81.5	
	1430	397.2	51.0		261.5			76	
400SLLC-62B	955	265.3	58.8	1480	192.5	280	Y355L1-4	79.5	2650+400N
	1200	333.3	51.2		206.7			81	
	1364	378.9	45.4		225.0			75	
400SLLC-62F	1200	333.3	71.2	1480	287.4	400	YLS400-4	81	2650+400N
	1500	416.7	62		309.1			82	
	1700	472.2	55		330.9			77	

Chart 9

Parameter Model NO	Flow Q		Head H m	Speed n r/min	Shaft Power Pa kW	Motor		Eff. $\eta$ %	Pump Weight kg
	m <sup>3</sup> /h	l/s				Power P kW	Model NO		
400SLLC2-78	1050	291.7	88.6	1480	329.2	450	YLS400-4	77	2750+400N
	1320	366.7	78		340.1			82.5	
	1500	416.7	68.6		369.0			76	
400SLLC2-78A	1000	277.8	79.4	1480	282.8	400	YLS400-4	76.5	2750+400N
	1250	347.2	70		290.8			82	
	1430	397.2	61.4		319.0			75	
400SLLC2-78F	1200	333.3	88.6	1480	376.3	450	YLS400-4	77	2750+400N
	1500	416.7	78		386.5			82.5	
	1700	472.2	68.6		418.1			76	
400SLLC2-124	1050	291.7	137	1480	490.0	710	YLS450-4	80	3200+500N
	1320	366.7	124		547.3			81.5	
	1500	416.7	113.2		608.8			76	
400SLLC2-124A	955	265.3	117.7	1480	385.3	500	YLS400-4	79.5	3200+500N
	1200	333.3	102.5		413.8			81	
	1364	378.9	90.9		450.5			75	
400SLLC2-124F	1200	333.3	137	1480	559.9	800	YLS450-4	80	3200+500N
	1500	416.7	124		621.9			81.5	
	1700	472.2	113.2		690.0			76	



400SLLC3-186	1050	291.7	205.8	1480	736.1	1000	YLS450-4	80	3800+550N
	1320	366.7	186		820.9			81.5	
	1500	416.7	170.1		914.8			76	
400SLLC3-186A	955	265.3	176.5	1480	577.8	710	YLS450-4	79.5	3800+550N
	1200	333.3	153.7		620.5			81	
	1364	378.9	136.4		676.0			75	
400SLLC3-186F	1200	333.3	205.8	1480	841.2	1120	YLS500-4	80	3800+550N
	1500	416.7	186		932.9			81.5	
	1700	472.2	170.1		1037			76	
400SLLC4-248	1050	291.7	274.4	1480	981.4	1400	YLS500-4	80	4400+600N
	1320	366.7	248		1094.5			81.5	
	1500	416.7	226.8		1219.8			76	
400SLLC4-248A	955	265.3	235.4	1480	770.6	1000	YLS450-4	79.5	4400+600N
	1200	333.3	205		827.6			81	
	1364	378.9	181.8		901.0			75	
400SLLC4-248F	1200	333.3	274.4	1480	1122	1600	YLS560-4	80	4400+600N
	1500	416.7	248		1244			81.5	
	1700	472.2	226.8		1382			76	
450SLLC-18	1600	444.4	22.5	980	119.6	132	Y315L2-6	83	2540+450N
	1800	500	18		105.1			84	
	2000	555.6	13		93.2			76	

Chart 10

Parameter Model NO	Flow Q		Head H m	Speed n r/min	Shaft Power Pa kW	Motor		Eff. $\eta$ %	Pump Weight kg
	m <sup>3</sup> /h	l/s				Power P kW	Model NO		
450SLLC-18A	1425	395.8	16.4	980	77.7	110	Y315L1-6	82	2540+450N
	1653	459.2	15.2		82.5			83	
	1824	506.7	12.7		84.2			75	
450SLLC-28	1600	444.4	30	980	161.5	220	Y355L1-6	81	2650+500N
	1800	500	28		163.5			84	
	2000	555.6	24		167.7			78	
450SLLC-28A	1425	395.8	25.3	980	122.8	200	Y355M3-6	80	2650+500N
	1653	459.2	23.6		128.1			83	
	1824	506.7	20.3		131			77	
450SLLC-28B	1350	375	24.1	980	112.2	160	Y355M1-6	79	2650+500N
	1566	435	22		114.5			82	
	1728	480	20.3		125.8			76	
450SLLC-44	1600	444.4	47.2	980	255.6	315	YLS400-6	80.5	2800+500N
	1800	500	44		261.6			82.5	
	2000	555.6	38		268.9			77	
450SLLC-44A	1425	395.8	42.9	980	209.5	280	YLS355-6	79.5	2800+500N
	1653	459.2	38.9		215.0			81.5	

	1824	506.7	35.4		231.5			76	
450SLLC-44B	1350	375	38.5	980	181.6	250	Y355L2-6	78	2800+500N
	1566	435	34.9		183.9			81	
	1728	480	31.8		199.7			75	
450SLLC2-56	1600	444.4	60	980	322.9	400	YLS400-6	81	3100+500N
	1800	500	56		327			84	
	2000	555.6	48.8		340.9			78	
450SLLC2-56A	1425	395.8	53.8	980	264.4	355	YLS400-6	79	3100+500N
	1653	459.2	49.1		268.1			82.5	
	1824	506.7	45.1		295.0			76	
450SLLC2-88	1600	444.4	94.5	980	518.2	630	YLS450-6	79.5	3500+500N
	1800	500	88		526.4			82	
	2000	555.6	76.2		546.4			76	
450SLLC2-88A	1425	395.8	85.7	980	421.2	560	YLS450-6	79	3500+500N
	1653	459.2	77.8		432.6			81	
	1824	506.7	70.8		469.2			75	
450SLLC2-88B	1350	375	76.9	980	362.7	450	YLS400-6	78	3500+500N
	1566	435	69.8		372.3			80	
	1728	480	63.5		404.1			74	
450SLLC3-132	1600	444.4	142.2	980	779.8	900	YLS500-6	79.5	4300+600N
	1800	500	132		789.6			82	
	2000	555.6	113.1		811			76	

Chart 11

Parameter Model NO	Flow Q		Head H m	Spee d n r/min	Shaft Power Pa kW	Motor		Eff. η %	Pump Weight kg
	m³/h	l/s				Power P kW	Modle NO		
450SLLC3-132A	1425	395.8	128.6	980	632.1	800	YLS450-6	79	4300+600N
	1653	459.2	116.7		649.0			81	
	1824	506.7	106.1		703.1			75	
450SLLC3-132B	1350	375	115.4	980	544.3	710	YLS450-6	78	4300+600N
	1566	435	104.7		558.5			80	
	1728	480	95.3		606.4			74	
450SLLC4-176	1600	444.4	188.5	980	1034	1250	YLS560-6	79.5	5100+750N
	1800	500	176		1053			82	
	2000	555.6	148.8		1067			76	
450SLLC4-176A	1425	395.8	171.5	980	843.0	1000	YLS500-6	79	5100+750N
	1653	459.2	155.6		865.3			81	
	1824	506.7	141.5		937.7			75	
450SLLC4-176B	1350	375	153.9	980	725.8	900	YLS500-6	78	5100+750N
	1566	435	139.6		744.7			80	
	1728	480	127		808.1			74	
450SLLC5-220	1600	444.4	237.4	980	1302	1600	YLS560-6	79.5	5900+850N

	1800 2000	500 555.6	220 187.5		1316 1344			82 76	
450SLLC5-220A	1425 1653 1824	395.8 459.2 506.7	214.3 194.5 176.9	980	1053.4 1081.6 1172.4	1250	YLS560-6	79 81 75	5900+850N
450SLLC5-220B	1350 1566 1728	375 435 480	192.4 174.6 158.8	980	907.4 931.3 1010.5	1120	YLS500-6	78 80 74	5900+850N
500SLLC-20	2000 2160 2400	555.6 600 666.7	20.8 20 17.8	980	137.4 139.3 147.4	200	Y355M3-6	82.5 84.5 79	3600+900N
500SLLC-20A	1824 2052 2280	506.7 570 633.3	19 18.1 16.1	980	119.5 120.5 128.2	160	Y355M1-6	79 84 78	3600+900N
500SLLC-20F	2160 2400 2600	600 666.7 722.2	21 20 17.8	980	154.5 154.8 159.6	200	Y355M3-6	80 84.5 79	3600+900N
500SLLC-23	2160 2400 2600	600 666.7 738.9	24.4 23 21.8	980	177.3 180.1 193.1	220	Y355L1-6	81 83.5 80	3600+900N
500SLLC-31	2000 2160 2400	555.6 600 666.7	32.7 31.5 28.5	980	217.3 220.0 235.9	280	YLS355-6	82 84 79	4000+900N

Chart 12

Parameter Model NO	Flow Q		Head H	Speed n	Shaft Power Pa	Motor		Eff. $\eta$	Pump Weight
	m <sup>3</sup> /h	l/s				m	r/min		
			%	kg					
500SLLC-31A	1824	506.7	30	980	186.4	250	Y355L2-6	80	4000+900N
	2052	570	28.3		190.7			83	
	2280	633.3	25.7		204.7			78	
500SLLC-31B	1728	480	27	980	158.9	220	Y355L1-6	80	4000+900N
	1944	540	25.4		163.1			82.5	
	2160	600	23.1		176.6			77	
500SLLC-31F	2160	600	33	980	239.8	315	YLS400-6	81	4000+900N
	2400	666.7	31.5		245.3			84	
	2600	722.2	28.5		255.6			79	
500SLLC-50	2000	555.6	52.8	980	351	450	YLS400-6	82	4300+900N
	2160	600	50		354.6			83	
	2400	666.7	45.6		387.3			77	
500SLLC-50A	1824	506.7	48.7	980	298.8	400	YLS400-6	81	4300+900N
	2052	570	45.1		307.5			82	

	2280	633.3	41.2		336.8			76	
500SLLC-50B	1728	480	43.7		257.2			80	
	1944	540	40.5	980	264.9	355	YLS400-6	81	4300+900N
	2160	600	36.9		289.6			75	
500SLLC-50F	2160	600	54		387.6			82	
	2400	666.7	50	980	394	500	YLS400-6	83	4300+900N
	2600	722.2	45.6		419.6			77	
500SLLC2-63	2000	555.6	64.9		436.7			82	
	2160	600	63	980	441.5	560	YLS450-6	84	4600+900N
	2400	666.7	57		477.9			78	
500SLLC2-63A	1824	506.7	60		377.5			79	
	2052	570	56.7	980	384.3	500	YLS400-6	82.5	4600+900N
	2280	633.3	51.4		414.7			77	
500SLLC2-63F	2160	600	66		485.6			80	
	2400	666.7	63	980	493.4	560	YLS450-6	83.5	4600+900N
	2600	722.2	57		517.7			78	
500SLLC2-100	2000	555.6	104.9		705.8			81	
	2160	600	100	980	713.5	900	YLS500-6	82.5	5200+1000N
	2400	666.7	91.2		784.8			76	
500SLLC2-100A	1824	506.7	97.5		605.8			80	
	2052	570	90.3	980	619.5	800	YLS450-6	81.5	5200+1000N
	2280	633.3	82.3		681.8			75	
500SLLC2-100B	1728	480	87.5		521.5			79	
	1944	540	81	980	529.7	630	YLS450-6	81	5200+1000N
	2160	600	73.9		583.9			74.5	

Chart 13

Parameter Model NO	Flow Q		Head H	Speed n	Shaft Power Pa	Motor		Eff. $\eta$	Pump Weight
	m <sup>3</sup> /h	l/s				r/min	kW		
500SLLC2-100F	2160	600	108		784.8			81	
	2400	666.7	100	980	792.7	900	YLS500-6	82.5	5200+1000N
	2600	722.2	91.2		850.2			76	
500SLLC3-150	2000	555.6	158.2		1065			81	
	2160	600	150	980	1070.2	1250	YLS560-6	82.5	6200+1000N
	2400	666.7	136.8		1177.2			76	
500SLLC3-150A	1824	506.7	146.2		908.3			80	
	2052	570	135.4	980	929.0	1120	YLS500-6	81.5	6200+1000N
	2280	633.3	123.5		1023.1			75	
500SLLC3-150B	1728	480	131.2		782.0			79	
	1944	540	121.5	980	794.6	1000	YLS500-6	81	6200+1000N

	2160	600	110.8		875.4			74.5	
500SLLC3-150 F	2160	600	162		1177.2			81	
	2400	666.7	150	980	1189.2	1400	YLS560-6	82.5	6200+1000N
	2600	722.2	136.8		1275.3			76	
500SLLC4-200	2000	555.6	210.5		1416.4			81	
	2160	600	200	980	1426.9	1800	YLS630-6	82.5	7400+1200N
	2400	666.7	182.4		1569.6			76	
500SLLC4-200 A	1824	506.7	194.9		1210.9			80	
	2052	570	180.5	980	1238.4	1600	YLS560-6	81.5	7400+1200N
	2280	633.3	164.6		1363.5			75	
500SLLC4-200 B	1728	480	175		1043.1			79	
	1944	540	162	980	1059.5	1250	YLS560-6	81	7400+1200N
	2160	600	147.7		1166.9			74.5	
500SLLC4-200 F	2160	600	216		1569.6			81	
	2400	666.7	200	980	1585.5	1800	YLS630-6	82.5	7400+1200N
	2600	722.2	182.4		1700.3			76	
600SLLC-25	2600	722.2	27.5		234.7			83	
	3000	833.3	25	980	238.8	315	YLS400-6	85.6	4800+1060N
	3420	950	21.6		245.5			82	
600SLLC-25A	2280	633.3	26.8		205.6			81	
	2850	791.7	22.6	980	206.5	280	YLS355-6	85	4800+1060N
	3249	902.5	19.5		213.1			81	
600SLLC-25F	2800	777.8	28.8		273.4			81.5	
	3500	972.2	25	980	278.5	355	YLS400-6	85.6	4800+1060N
	3800	1055.6	23.1		291.7			82	
600SLLC-39	2600	666.7	43.9		354.5			81	
	3000	833.3	39	980	375.1	450	YLS400-6	85	5340+1060N
	3420	950	34.3		389.8			82	

Chart 14

Parameter Model NO	Flow Q		Head H	Spee d n	Shaft Power Pa	Motor		Eff. $\eta$	Pump Weight
	m <sup>3</sup> /h	l/s				m	r/min		
			kW	kg					
600SLLC-39A	2280	633.3	39.6		303.7			81	5340+1060 N
	2850	791.7	35.2	980	325.4	400	YLS400-6	84	
	3249	902.5	31		338.8			81	
600SLLC-39B	2160	600	35.6		261.9			80	5340+1060 N
	2700	750	31.6	980	278.4	355	YLS400-6	83.5	
	3078	855	27.8		287.9			81	
600SLLC-39F	2800	777.8	43.9	980	413.5		YLS400-6	81	

	3500 3800	972.2 1055.6	39 34.5		437.6 441.0	500		85 81	5340+1060 N
600SLLC-62	2600 3000 3420	722.2 833.3 950	69 62 54	980	582.0 599.8 621.3	710	YLS450-6	84 84.5 81	5440+1060 N
600SLLC-62A	2280 2850 3249	633.3 791.7 902.5	64.1 56 48.7	980	479.8 517.8 535.6	630	YLS450-6	83 84 80.5	5440+1060 N
600SLLC-62B	2160 2700 3078	600 750 855	57.5 50.2 43.7	980	412.7 442.3 458.2	560	YLS450-6	82 83.5 80	5440+1060 N
600SLLC-62F	2800 3500 3800	777.8 972.2 1055.6	71 62 55	980	644.9 699.8 703.1	800	YLS450-6	84 84.5 81	5440+1060 N
600SLLC2-78	2600 3000 3420	722.2 833.3 950	84.8 78 68.6	980	751.0 754.6 789.3	900	YLS500-6	80 84.5 81	6400+1100 N
600SLLC2-78A	2280 2850 3249	633.3 791.7 902.5	79.2 70.4 61.9	980	615.1 650.9 685.0	800	YLS450-6	80 84 80	6400+1100 N
600SLLC2-78F	2800 3500 3800	777.8 972.2 1055.6	87.8 78 69.1	980	797.5 880.4 883.3	1000	YLS500-6	80 84.5 81	6400+1100 N
600SLLC2-124	2600 3000 3420	722.2 833.3 950	138.5 124 108	980	1182.2 1214.0 1250.3	1400	YLS560-6	83 83.5 80.5	7000+1200 N
600SLLC2-124 A	2280 2850 3249	633.3 791.7 902.5	128.2 111.9 97.5	980	971.3 1047.0 1079.0	1250	YLS560-6	82 83 80	7000+1200 N
600SLLC2-124 B	2160 2700 3078	600 750 855	115 100.4 87.5	980	835.7 895.4 929.0	1000	YLS500-6	81 82.5 79	7000+1200 N

Chart 15

Parameter Model NO	Flow Q		Head H	Speed n	Shaft Power Pa	Motor		Eff. η	Pump Weight
	m³/h	l/s				Power P	Model NO		
			kW	kg					
			m	r/mi	kW	kW		%	kg

				n					
600SLLC2-124 F	2800 3500 3800	777.8 972.2 1055.6	142 124 115	980	1305.2 1416.3 1479.2	1600	YLS560-6	83 83.5 80.5	7000+1200 N
600SLLC3-186	2600 3000 3420	722.2 833.3 950	207 186 162	980	1767.0 1821.0 1875.5	2240	YLS630-6	83 83.5 80.5	9000+1400 N
600SLLC3-186 A	2280 2850 3249	633.3 791.7 902.5	192.2 167.9 146.2	980	1456.3 1571.0 1618.0	1800	YLS630-6	82 83 80	9000+1400 N
600SLLC3-186 B	2160 2700 3078	600 750 855	172.5 150.7 131.2	980	1253.5 1344.0 1393.0	1600	YLS560-6	81 82.5 79	9000+1400 N
600SLLC3-186 F	2800 3500 3800	777.8 972.2 1055.6	215 186 169	980	1976.2 2124.5 2173.8	2500	YLS630-6	83 83.5 80.5	9000+1400 N
700SLLC-20	3800 4200 4600	1055.6 1166.7 1277.8	21.7 20.3 18.5	740	270.7 271.7 276.1	315	YLS400-8	83 85.5 84	5230+1200 N
700SLLC-20A	3249 3705 4161	902.5 1029.2 1155.8	20.2 18.3 16.2	740	218.1 220.0 226.8	280	YLS400-8	82 84 81	5230+1200 N
700SLLC-32	3800 4200 4600	1055.5 1166.6 1277.8	33.7 32 28	740	425.5 430.9 433.3	500	YLS450-8	82 85 81	5440+1200 N
700SLLC-32A	3249 3705 4161	902.5 1029.2 1155.8	30.4 28.9 24.9	740	336.4 347.4 348.6	400	YLS450-8	80 84 81	5440+1200 N
700SLLC-32B	3078 3510 3942	855 975 1095	27.3 25.9 22.4	740	289.8 298.5 300.8	355	YLS400-8	79 83 80	5440+1200 N
700SLLC-50	3800 4200 4600	1055.5 1166.6 1277.8	54.6 50.3 44.8	740	681.1 685.3 693.3	800	YLS500-8	83 84 81	5800+1200 N
700SLLC-50A	3249 3705 4161	902.5 1029.2 1155.8	49.3 45.4 40.4	740	532.3 552.2 572.6	710	YLS500-8	82 83 80	5800+1200 N
700SLLC-50B	3078	855	44.2	740	463.4		YLS450-8	80	

	3510 3942	975 1095	40.7 36.3		474.7 493.6	560		82 79	5800+1200 N
--	--------------	-------------	--------------	--	----------------	-----	--	----------	----------------

Chart 16

Parameter Model NO	Flow Q		Head H m	Speed n r/min	Shaft Power Pa kW	Motor		Eff. $\eta$ %	Pump Weight kg
	m <sup>3</sup> /h	l/s				Power P kW	Model NO		
700SLLC2-64	3800	1055.5	67.4		872.4			80	7000+1200 N
	4200	1166.6	64	740	882.5	1000	YLS560-8	83	
	4600	1277.8	56.8		884.5			80.5	
700SLLC2-64A	3249	902.5	60.8		681.4			79	7000+1200 N
	3705	1029.2	57.8	740	703.1	800	YLS500-8	83	
	4161	1155.8	49.8		705.8			80	
700SLLC2-100	3800	1055.5	109.2		1378.9			82	8400+1400 N
	4200	1166.6	100.6	740	1387.1	1600	YLS630-8	83	
	4600	1277.8	89.6		1403.9			80	
700SLLC2-100 A	3249	902.5	98.6		1077.7			81	8400+1400 N
	3705	1029.2	90.8	740	1111.2	1250	YLS630-8	82.5	
	4161	1155.8	80.9		1161.1			79	
700SLLC2-100 B	3078	855	88.5		927.9			80	8400+1400 N
	3510	975	81.5	740	950.6	1120	YLS560-8	82	
	3942	1095	72.6		999.8			78	
700SLLC3-150	3800	1055.5	160.8		2030.5			82	11000+1600 N
	4200	1166.6	150.9	740	2068.2	2500	YL2500-8	83.5	
	4600	1277.8	134.4		2105.9			80	
700SLLC3-150 A	3249	902.5	147.8		1615.5			81	11000+1600 N
	3705	1029.2	136.2	740	1666.8	2000	YL2000-8	82.5	
	4161	1155.8	121.3		1741.0			79	
700SLLC3-150 B	3078	855	132.7		1391.3			80	11000+1600 N
	3510	975	122.2	740	1425.4	1600	YLS630-8	82	
	3942	1095	108.9		1499.7			78	
800SLLC-24	4600	1277.8	26.4		394			84	6120+1380 N
	5100	1416.7	24.3	740	397.3	500	YLS450-8	85	
	5600	1555.6	22		414.5			81	
800SLLC-24A	4161	1155.8	24.7		337.4			83	6120+1380 N
	4845	1345.8	21.9	740	342.2	450	YLS450-8	84.5	
	5320	1477.8	19.9		360.6			80	
800SLLC-38	4600	1277.8	41.2	740	618.5		YLS500-8	83.5	



	5100 5600	1416.7 1555.6	38 34.9		621.3 649.5	710		85 82	6340+1380 N
800SLLC-38A	4161 4845 5320	1155.8 1345.8 1477.8	37.5 34.3 31.5	740	515.4 535.9 563.8	630	YLS500-8	82.5 84.5 81	6340+1380 N
800SLLC-38B	3942 4590 5040	1095 1275 1400	33.6 30.8 28.3	740	445.6 461.4 485.8	560	YLS450-8	81 83.5 80	6340+1380 N

Chart 17

Parameter Model NO	Flow Q		Head H m	Speed n r/min	Shaft Power Pa kW	Motor		Eff. $\eta$ %	Pump Weight kg
	m <sup>3</sup> /h	l/s				Power P kW	Model NO		
800SLLC-60	4600 5100 5600	1277.8 1416.7 1555.6	65.5 60.2 55	740	989.2 996.0 1023.6	1120	YLS560-8	83 84 82	6700+1400 N
800SLLC-60A	4161 4845 5320	1155.8 1345.8 1477.8	58.5 54.3 51.2	740	808.9 863.7 916.4	1000	YLS560-8	82 83 81	6700+1400 N
800SLLC-60B	3942 4590 5040	1095 1275 1400	55.5 48.8 44.6	740	736.0 744.4 765.7	900	YLS560-8	81 82 80	6700+1400 N
800SLLC2-76	4600 5100 5600	1277.8 1416.7 1555.6	82 76 69.8	740	1238.4 1242.6 1315	1400	YLS630-8	83 85 81	9000+1400 N
800SLLC2-76A	4161 4845 5320	1155.8 1345.8 1477.8	74.9 68.6 63.0	740	1035.7 1078.2 1141.6	1250	YLS630-8	82 84 80	9000+1400 N
800SLLC2-120	4600 5100 5600	1277.8 1416.7 1555.6	129.6 120.4 113.4	740	1981.1 2003.9 2136.4	2500	YL2500-8	82 83.5 81	10000+1800 N
800SLLC2-120 A	4161 4845 5320	1155.8 1345.8 1477.8	123.6 108.7 99.3	740	1719.6 1739.5 1799.4	2000	YL2000-8	81.5 82.5 80	10000+1800 N

800SLLC2-120 B	3942	1095	111	740	1472.0	1800	YLS630-8	81	10000+1800 N
	4590	1275	97.5		1496.3			81.5	
	5040	1400	89.1		1549.0			79	
800SLLC3-180	4600	1277.8	196.5	740	2985.6	3550	YL3550-8	82	13800+2000 N
	5100	1416.7	180.6		3005.8			83.5	
	5600	1555.6	165		3108.5			81	
800SLLC3-180 A	4161	1155.8	185.5	740	2580.8	3150	YL3150-8	81.5	13800+2000 N
	4845	1345.8	163		2608.5			82.5	
	5320	1477.8	148.9		2698.3			80	
800SLLC3-180 B	3942	1095	166.5	740	2208.1	2500	YL2500-8	81	13800+2000 N
	4590	1275	146.3		2245.3			81.5	
	5040	1400	133.7		2324.3			79	
900SLLC-21	5600	1555.6	22.8	590	411.8	500	YLS500-10	84.5	7120+1630 N
	6300	1750	21		419.2			86	
	7000	1944.4	18.8		437.3			82	
900SLLC-21A	5320	1477.8	20.2	590	352.8	450	YLS450-10	83	7120+1630 N
	5985	1662.5	18.9		362.6			85	
	6650	1847.2	17.0		380.3			81	

Chart 18

Parameter Model NO	Flow Q		Head H	Speed n	Shaft Power Pa	Motor		Eff. $\eta$	Pump Weight
	m <sup>3</sup> /h	l/s				m	r/min		
			%	kg					
900SLLC-21F	6200	1722.2	23.1	590	464.6	560	YLS500-10	84	7120+1630 N
	7000	1944.4	21		465.8			86	
	7600	2111.1	18.8		474.8			82	
900SLLC-33	5600	1555.6	35.5	590	644.9	800	YLS560-10	84	7410+1630 N
	6300	1750	33		658.8			86	
	7000	1944.4	30.1		700.2			82	
900SLLC-33A	5320	1477.8	32	590	558.9	710	YLS500-10	83	7410+1630 N
	5985	1662.5	29.8		571.8			85	
	6650	1847.2	27.2		608.5			81	
900SLLC-33B	5040	1400	28.8	590	482.4	630	YLS500-10	82	7410+1630 N
	5670	1575	26.7		491.1			84	
	6300	1750	24.4		523.6			80	

900SLLC-33F	6200 7000 7600	1722.2 1944.4 2111.1	35.5 33 30.1	590	714 731.9 760.2	900	YLS560-10	84 86 82	7410+1630 N
900SLLC-52	5600 6300 7000	1555.6 1750 1944.4	56 52 48.5	590	1023.4 1056.5 1142.1	1250	YLS630-10	83.5 84.5 81	7820+1630 N
900SLLC-52A	5320 5985 6650	1477.8 1662.5 1847.2	50.5 46.9 43.8	590	888.1 916.6 991.5	1120	YLS630-10	82.5 83.5 80	7820+1630 N
900SLLC-52B	5040 5670 6300	1400 1575 1750	45.4 42.1 39.3	590	769.1 793.6 864.7	1000	YLS560-10	81 82 78	7820+1630 N
900SLLC-52F	6200 7000 7600	1722.2 1944.4 2111.1	56 52 48.8	590	1133.1 1173.8 1247.7	1400	YLS630-10	83.5 84.5 81	7820+1630 N
900SLLC2-66	5600 6300 7000	1555.6 1750 1944.4	71 66 60.2	590	1305.4 1333.0 1417.7	1600	YL1600-10	83 85 81	11500+1800 N
900SLLC2-66A	5320 5985 6650	1477.8 1662.5 1847.2	64.1 59.6 54.3	590	1133.2 1157.2 1230.0	1400	YLS630-10	82 84 80	11500+1800 N
900SLLC2-66F	6200 7000 7600	1722.2 1944.4 2111.1	71 66 60.2	590	1445.2 1481.1 1539.2	1800	YL1800-10	83 85 81	11500+1800 N
900SLLC2-104	5600 6300 7000	1555.6 1750 1944.4	112 104 97	590	2046.9 2112.9 2284.3	2500	YL2500-10	83.5 84.5 81	13000+2000 N

Chart 19

Parameter Model NO	Flow Q		Head H	Speed n	Shaft Power Pa	Motor		Eff. $\eta$	Pump Weight
	m <sup>3</sup> /h	l/s				r/min	kW		
			kW	%	kg				
900SLLC2-104 A	5320 5985 6650	1477.8 1662.5 1847.2	101.1 93.9 87.5	590	1776.2 1833.3 1983.0	2240	YL2240-10	82.5 83.5 80	13000+2000 N
900SLLC2-104 B	5040 5670	1400 1575	90.7 84.2	590	1538.2 1587.3	2000	YL2000-10	81 82	13000+2000 N

	6300	1750	78.6		1729.3			78	
900SLLC2-104 F	6200	1722.2	112	590	2266.2	2800	YL2800-10	83.5	13000+2000 N
	7000	1944.4	104		2347.7			84.5	
	7600	2111.1	97.6		2495.4			81	
900SLLC3-156	5600	1555.6	168	590	3070.3	4000	YL4000-10	83.5	19000+2300 N
	6300	1750	156		3169.4			84.5	
	7000	1944.4	145.5		3426.4			81	
900SLLC3-156 A	5320	1477.8	151.6	590	2664.3	3550	YL3550-10	82.5	19000+2300 N
	5985	1662.5	140.8		2749.9			83.5	
	6650	1847.2	131.3		2974.5			80	
900SLLC3-156 B	5040	1400	136.1	590	2307.3	2800	YL2800-10	81	19000+2300 N
	5670	1575	126.4		2380.9			82	
	6300	1750	117.9		2593.9			78	
900SLLC3-156 F	6200	1722.2	168	590	3399.2	4500	YL4500-10	83.5	19000+2300 N
	7000	1944.4	156		3521.5			84.5	
	7600	2111.1	146.4		3743.1			81	
1000SLLC-25	7600	2111.1	27.0	590	661.7	800	YLS560-10	84.5	8240+1950 N
	8400	2333.3	25.2		666.9			86.5	
	9400	2611.1	22.4		699.7			82	
1000SLLC-25A	6650	1847.2	25.8	590	563.3	710	YLS500-10	83	8240+1950 N
	7980	2216.7	22.7		580.7			85	
	8930	2480.6	20.2		606.9			81	
1000SLLC-39	7600	2111.1	41.8	590	1043	1250	YLS630-10	83	8510+1950 N
	8400	2333.3	39.4		1048.7			86	
	9400	2611.1	35.1		1083.2			83	
1000SLLC-39A	6650	1847.2	39.4	590	881.5	1120	YLS630-10	81	8510+1950 N
	7980	2216.7	35.6		910.8			85	
	8930	2480.6	31.7		940.7			82	
1000SLLC-39B	6300	1750	35.4	590	759.7	900	YLS560-10	80	8510+1950 N
	7560	2100	31.9		782.3			84	
	8460	2350	28.4		808.3			81	
1000SLLC-63	7600	2111.1	68.5	590	1688.8	2000	YL2000-10	84	9000+1950 N
	8400	2333.3	63		1696.6			85	
	9400	2611.1	57		1780.6			82	

Chart 20

Parameter Model NO	Flow Q		Head H	Speed n	Shaft Power Pa	Motor		Eff. $\eta$	Pump Weight
	m <sup>3</sup> /h	l/s				Power P	Model NO		
			kW	%	kg				
1000SLLC-63A	6650	1847.2	63.6	590	1388.6	2000	YL2000-	83	9000+1950

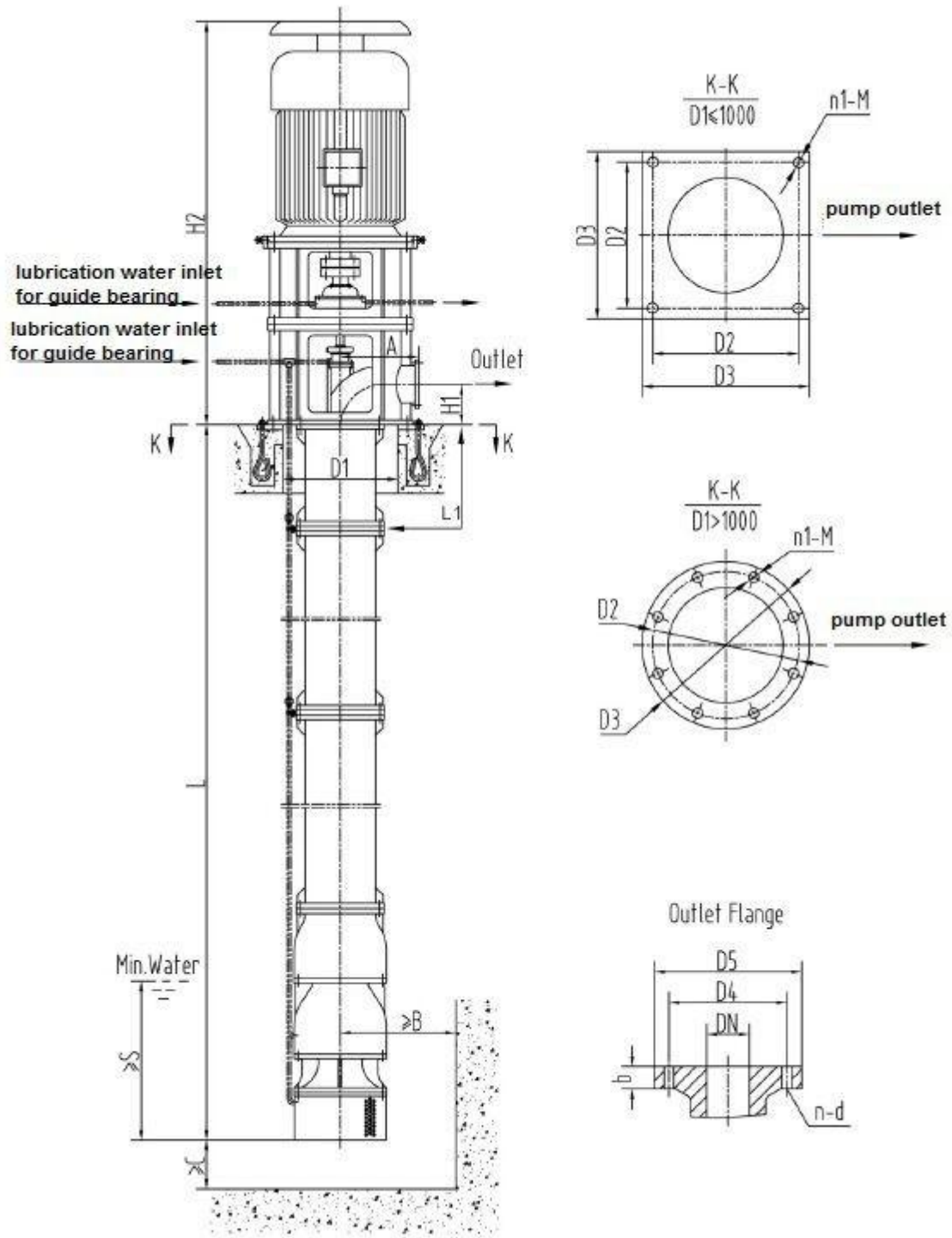
	7980 8930	2216.7 2480.6	56.9 51.4		1473.0 1544.2		10	84 81	N
1000SLLC-63B	6300 7560 8460	1750 2100 2350	57.1 51 46.2	590	1195.4 1265.8 1331.3	1600	YL1600- 10	82 83 80	9000+1950 N
1000SLLC2-78	7600 8400 9400	2111.1 2333.3 2611.1	84.0 78.8 70.2	590	2108.6 2122.0 2192.9	2500	YL2500- 10	82.5 85 82	13500+1950 N
1000SLLC2-78 A	6650 7980 8930	1847.2 2216.7 2480.6	78.9 71.2 63.4	590	1787.2 1843.2 1904.7	2240	YL2240- 10	80 84 81	13500+1950 N
1000SLLC2-12 6	7600 8400 9400	2111.1 2333.3 2611.1	135 126 114	590	3368.5 3413.2 3605.1	4000	YL4000- 10	83 84.5 81	15600+2500 N
1000SLLC2-12 6A	6650 7980 8930	1847.2 2216.7 2480.1	127.3 113.7 102.9	590	2813.2 2961.0 3169.6	3550	YL3550- 10	82 83.5 79	15600+2500 N
1000SLLC3-18 9	7600 8400 9400	2111.1 2333.3 2611.1	204.2 189 171	590	5095.1 5119.8 5407.6	6300	YL6300- 10	83 84.5 81	23000+2800 N
1000SLLC3-18 9A	6650 7980 8930	1847.2 2216.7 2480.6	190.9 170.6 154.3	590	4218.7 4442.9 4752.9	5600	YL5600- 10	82 83.5 79	23000+2800 N
1000SLLC3-18 9B	6300 7560 8460	1750 2100 2350	171.3 153.1 138.5	590	3630.6 3856.4 4093.5	4500	YL4500- 10	81 82 78	23000+2800 N

Remark: N is the number of water column.

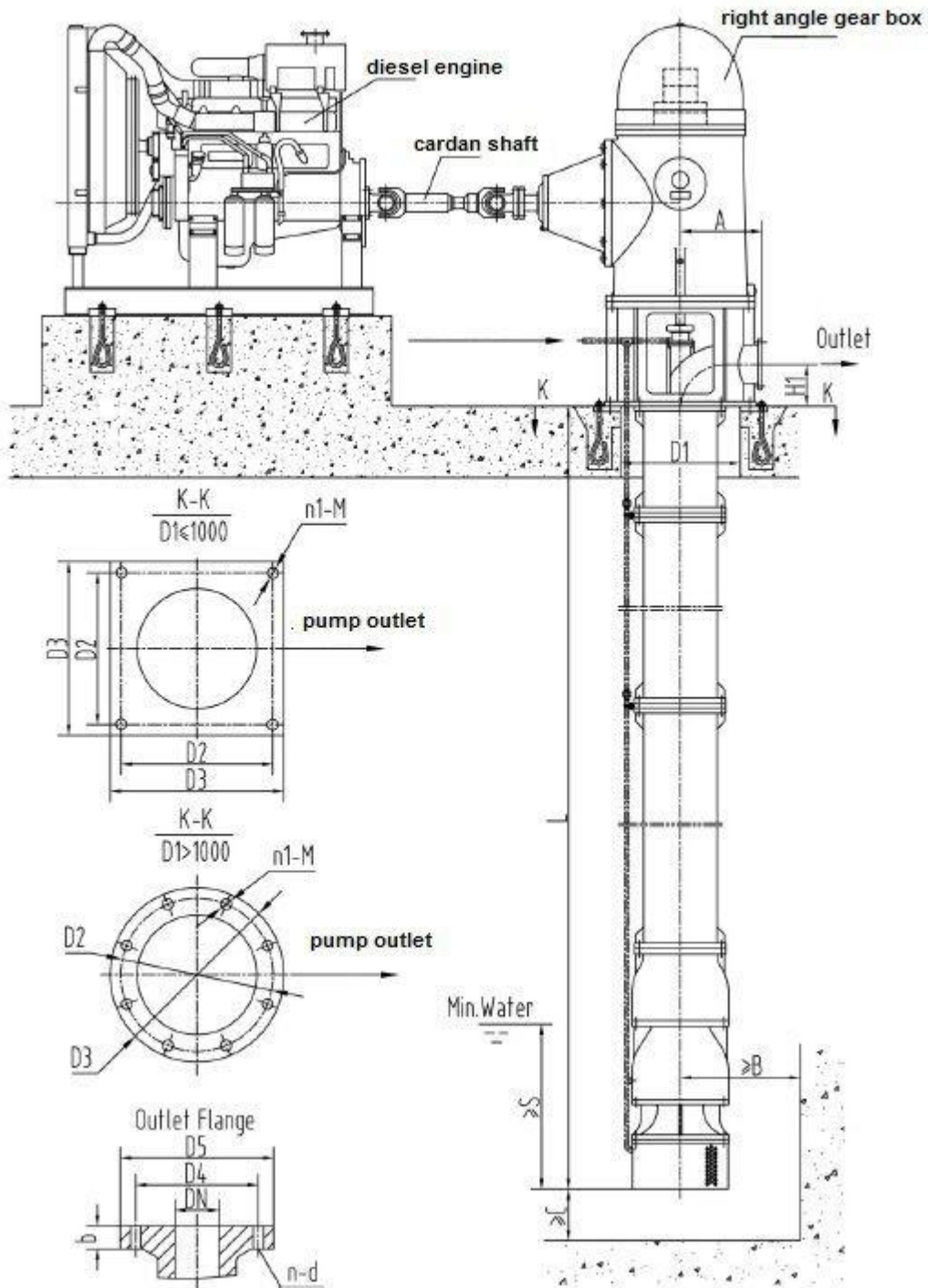
## MODEL DESCRIPTION

1. Pump performance refer to “Performance Data” charts. The data is test performance in a atmosphere & normal temperature & clear water, not including loss of water column and filter. Calculating installation head, the head loss of water column and filter to be calculated by 1.5m loss per 10m length.
2. Motor is selected by gravity  $\leq 110\text{Kg/cm}^3$ , the motor of YLS is for 6KV. The motor of 10KV can also be equipped if necessary.
3. The pump type, performance data, material, submerged depth must be staged in order.
4. It must be stated when the temperature of medium is over  $55^\circ\text{C}$ .

# INSTALLATION DRAWING 1



## INSTALLATION 2



## INSTALLATION OVERALL SIZE

MODEL NO	A	B	C	D1	D2	D3	n1-M	H1	H2	L	L1	S	
200SLLC-19E	400	250	200	φ500	600	660	4-M20X400	215	1680	620+L1+1400N	2~1200	750	
200SLLC-19									1800				
200SLLC-19A									1720				
200SLLC-19F									1850				
200SLLC-19FA									1800				
200SLLC-25E									1760				
200SLLC-25									1830				
200SLLC-25F									1870				
200SLLC2-38E									2080				950+L1+1400N
200SLLC2-38									2150				
200SLLC2-38F					2200								
200SLLC2-50E					2110	1280+L1+1400N							
200SLLC2-50					2200								
200SLLC2-50F					2280								
200SLLC3-75E					2230								
200SLLC3-75					2470	1610+L1+1400N							
200SLLC3-75F					2570								
200SLLC4-100E					2280	1940+L1+1400N							
200SLLC4-100					2570								
200SLLC4-100F					2570								
200SLLC5-125E	2470	2270+L1+1400N											
200SLLC5-125	2570												
200SLLC5-125F	2570												
200SLLC6-150E	420				650	720			2570				
200SLLC6-150									2570				
200SLLC6-150F									2730				
250SLLC-10	420	300	250	φ550	650	720	4-M24X500	265	1890	980+L1+1400N	2~1200	900	
250SLLC-14									2030				
250SLLC-20									2060				
250SLLC-32									2240	760+L1+1400N			
250SLLC-32A									2150				
250SLLC2-40					2290	1400+L1+1400N							
250SLLC2-64					2610	1130+L1+1400N							
250SLLC2-64A					2510								
250SLLC3-96					2780	1500+L1+1400N							
250SLLC3-96A					2650								
250SLLC4-128	520				800	870			2780	1870+L1+1400N			
250SLLC4-128A									2650				
250SLLC5-160									3250		2240+L1+1400N		



## INSTALLATION OVERALL SIZE

MODEL NO	A	B	C	D1	D2	D3	n1-M	H1	H2	L	L1	S						
300SLLC-10	500	350	250	φ650	750	820	4-M24X500	315	2110	950+L1+1400N	2~1200	1050						
300SLLC-14									2170									
300SLLC-19									2280									
300SLLC-19A									2170									
300SLLC-25									2380	1000+L1+1400N								
300SLLC-25A									2250									
300SLLC-33									2620	950+L1+1400N								
300SLLC-42					2780	980+L1+1400N												
300SLLC-42A					2560													
300SLLC2-50					2700	1440+L1+1400N												
300SLLC2-66					2740	1350+L1+1400N												
300SLLC2-84					2890	1420+L1+1400N												
300SLLC3-99					600								900	970			2980	1750+L1+1400N
300SLLC3-126																	3360	1860+L1+1400N
300SLLC4-168	3440	2300+L1+1400N																
300SLLC5-210	3520	2740+L1+1400N																
350SLLC-10	450			φ600			700	770									2260	1150+L1+1400N
350SLLC-14					2300													
350SLLC-19	550	400	300	φ750			4-M24X500	365	2450									
350SLLC-19F									2450									
350SLLC-30									2780	1200+L1+1400N								
350SLLC-30A、B									2680									
350SLLC-30F									2780									
350SLLC-40									2780	1120+L1+1400N								
350SLLC-40A									2680									
350SLLC-40F									2780									
350SLLC-48									2780	1160+L1+1400N								
350SLLC-48A									2680									
350SLLC-48F									2940									
350SLLC2-60									2940	1700+L1+1400N								
350SLLC2-60F									2940									
350SLLC2-80									650								2940	1580+L1+1400N
350SLLC2-80F	3160																	
350SLLC2-96	3160	1640+L1+2140N																
350SLLC2-96A	2940																	
350SLLC2-96F	3240																	
350SLLC3-120	3240		2040+L1+2140N															
350SLLC3-120F	3240																	
350SLLC3-144	3240	2120+L1+2140N																
350SLLC3-144F	3240																	

## INSTALLATION OVERALL SIZE

MDOEL NO	A	B	C	D1	D2	D3	n1-M	H1	H2	L	L1	S							
350SLLC4-192	650	400	300	φ750	1050	1130	4-M24X500	365	3500	2600+L1+2140N	2~2000	1250							
350SLLC4-192F																			
350SLLC5-240																			
350SLLC5-240F																			
400SLLC-10	600	500	300	φ750	850	920	4-M24X500	415	2440	1120+L1+1400N	2~1200	1350							
400SLLC-14									2580										
400SLLC-19									2630										
400SLLC-19A									2550										
400SLLC-19F									2730										
400SLLC-25									2820										
400SLLC-25A									2820										
400SLLC-25F									2820										
400SLLC-39									3000										
400SLLC-39A									2820										
400SLLC-39B				2820															
400SLLC-39F				3000	1260+L1+1400N														
400SLLC2-50																			
400SLLC2-50A																			
400SLLC2-50F																			
400SLLC-62				650	300	φ850			1000	1080			4-M24X500	415	3520	1660+L1+1400N	2~2000	1350	
400SLLC-62A															3440				
400SLLC-62B															3700				1200+L1+1400N
400SLLC-62F																			
400SLLC2-78																			
400SLLC2-78A																			
400SLLC2-78F	3960	1840+L1+1400N																	
400SLLC2-124																			
400SLLC2-124A																			
400SLLC2-124F																			
400SLLC3-186	800	300	φ850	1300	1400	4-M30X630	465	3960	2300+L1+2140N	2~2000	1600								
400SLLC3-186A								4060											
400SLLC3-186F																			
400SLLC4-248								3960				2850+L1+2140N							
400SLLC4-248A																			
400SLLC4-248F								4160											
450SLLC-18	650	600	350	φ950	1100	1200	4-M30X630	465	2940	1280+L1+1400N	2~1200	1600							
450SLLC-18A																			
450SLLC-28																			
450SLLC-28A																			
450SLLC-28B									3230										
450SLLC-28B	1380+L1+1400N																		

## INSTALLATION OVERALL SIZE

MODEL NO	A	B	C	D1	D2	D3	n1-M	H1	H2	L	L1	S
450SLLC-44	650				1100	1200	4-M30X630	465	3660	1280+L1+1400 N	2~1200	1600
450SLLC-44A									3660			
450SLLC-44B									3580			
450SLLC2-56									3660	2020+L1+1400 N		
450SLLC2-56A												
450SLLC2-88	600	350	φ950			4020			1880+L1+2540 N			
450SLLC2-88A						3710						
450SLLC2-88B												
450SLLC3-132	800				1300	1400			4220	2480+L1+2540 N		
450SLLC3-132 A									4120			
450SLLC3-132 B												
450SLLC4-176							4450	3080+L1+2540 N				
450SLLC4-176 A							4350					
450SLLC4-176 B												
450SLLC5-220							800					
450SLLC5-220 A	4400											
450SLLC5-220 B												
500SLLC-20	700	650	350	φ1050	φ1500	φ1600	6-M30X630	500	3160	1500+L1+2250 N	2~2000	1750
500SLLC-20A									3320			
500SLLC-20F									3370			
500SLLC-23									3430			
500SLLC-31									3640	1570+L1+2250 N		
500SLLC-31A												
500SLLC-31B												
500SLLC-31F												
500SLLC-50												
500SLLC-50A												

500SLLC-50B												
500SLLC-50F												
500SLLC2-63									399 0	2130+L1+2250 N		
500SLLC2-63A								373 0				
500SLLC2-63F								399 0				
500SLLC2-100									420 0	2220+L1+2650 N	2~2300	
500SLLC2-100 A									410 0			
500SLLC2-100 B									420 0			
500SLLC2-100 F									440 0			
500SLLC3-150									440 0	2870+L1+2650 N	2~2300	
500SLLC3-150 A	90				φ170	φ180			430 0			
500SLLC3-150 B	0				0	0			440 0			
500SLLC3-150 F									440 0			

## INSTALLATION OVERALL SIZE

MODEL NO	A	B	C	D1	D2	D3	n1- M	H1	H2	L	L1	S
500SLLC4-200									476 0	3520+L1+2650 N	2~2300	175 0
500SLLC4-200 A	100	65	35	φ105	φ190	φ200	8-M30X630		456 0			
500SLLC4-200 B	0	0	0	0	0	0			476 0			
500SLLC4-200 F												
600SLLC-25										369 0	1750+L1+2250 N	2~2000
600SLLC-25A	800	70	35	φ120	φ170	φ180	6-M30X630	60	363 0			
600SLLC-25F									369 0			
600SLLC-39									1900+L1+2250 N			
600SLLC-39A												
600SLLC-39B												

600SLLC-39F															
600SLLC-62															
600SLLC-62A														404	1800+L1+2250
600SLLC-62B														0	N
600SLLC-62F															
600SLLC2-78															
600SLLC2-78A														424	2750+L1+2650
600SLLC2-78F														0	
600SLLC2-124	900														
600SLLC2-124 A														446	2600+L1+2650
600SLLC2-124 B														0	
600SLLC2-124 F	436														
600SLLC2-124															
600SLLC2-124 F															
600SLLC3-186	100														
600SLLC3-186 A														482	3400+L1+2650
600SLLC3-186 B														0	
600SLLC3-186 F	472														
600SLLC3-186															
600SLLC3-186 F															
700SLLC-20	900														
700SLLC-20A														420	1900+L1+2250
700SLLC-32														0	N
700SLLC-32A														410	
700SLLC-32B														0	
700SLLC-50														420	2220+L1+2250
700SLLC-50A														0	N
700SLLC-50B														394	
700SLLC2-64														0	
700SLLC2-64A														445	2140+L1+2250
700SLLC2-100	0	N													
700SLLC2-100 A	435														
700SLLC2-100	0														
700SLLC2-64	100														
700SLLC2-64A														465	3170+L1+2650
700SLLC2-100														0	N
700SLLC2-100 A															
700SLLC2-100															
700SLLC2-100															

B									0			
---	--	--	--	--	--	--	--	--	---	--	--	--

## INSTALLATION OVERALL SIZE

MODEL NO	A	B	C	D1	D2	D3	n1-M	H1	H2	L	L1	S		
700SLLC3-150	1100	850	350	φ135 0	φ200 0	φ2100	8-M30X630	700	5780	3940+L1 +2650N		2100		
700SLLC3-150A									5680					
700SLLC3-150B									5080					
800SLLC-24	950	900	400	φ150 0	φ200 0	φ2100	8-M30X630	800	4520	2070+L1	2~2000	2300		
800SLLC-24A									4370	+2250N				
800SLLC-38									4520	2420+L1				
800SLLC-38A									4420	+2250N				
800SLLC-38B														
800SLLC-60									4740	2180+L1				
800SLLC-60A													4620	+2250N
800SLLC-60B														
800SLLC2-76	1000								5080	3470+L1	2~2300			
800SLLC2-76A										+2700N				
800SLLC2-120	1100	900	400	φ150 0	φ210 0	φ2200	8-M36X800	800	5940	3140+L1	2~2300	2300		
800SLLC2-120A									5740	+2700N				
800SLLC2-120B									5240					
800SLLC3-180									6350	4100+L1				
800SLLC3-180A									6250	+2700N				
800SLLC3-180B		6050												
900SLLC-21	1050	1000	400	φ170 0	φ220 0	φ2300	8-M36X800	900	4750	2300+L1	2~2000	2500		
900SLLC-21A									4650	+2250N				
900SLLC-21F									4750					
900SLLC-33									4900					
900SLLC-33A									4800	2550+L1				
900SLLC-33B													+2250N	
900SLLC-33F									4900					
900SLLC-52									5020	2400+L1				
900SLLC-52A													+2250N	
900SLLC-52B														4920
900SLLC-52F														
900SLLC2-66									5650	3650+L1				
900SLLC2-66A													+2700N	
900SLLC2-66F														
900SLLC2-104	1150								5880	3500+L1	2~2300			
900SLLC2-104A									5780	+2700N				
900SLLC2-104B														
900SLLC2-104F									6080					
900SLLC3-156										6450			4600+L1	

900SLLC3-156A											+2700N		
900SLLC3-156B										6350			

## INSTALLATION OVERALL SIZE

MODEL NO	A	B	C	D1	D2	D3	n1-M	H1	H2	L	L1	S
900SLLC3-156F	1150	1000	400	φ170 0	φ220 0	φ2300		900	6450	4600+L1 +2700N		2500
1000SLLC-25	1150	1200	400	φ190 0	φ245 0	φ2550	8-M36×800	1000	5100	2500+L1	2~2000	2700
1000SLLC-25A									5000	+2250N		
1000SLLC-39									5220	2750+L1		
1000SLLC-39A									5120	+2250N		
1000SLLC-39B												
1000SLLC-63									5760	2600+L1		
1000SLLC-63A									5710	+2250N		
1000SLLC-63B												
1000SLLC2-78									5970	4000+L1		
1000SLLC2-78A									1500			
1000SLLC2-126	+2700N											
1000SLLC2-126A												
1000SLLC3-189	6680	5000+L1										
1000SLLC3-189A	6480	+2700N										
1000SLLC3-189B												

Remark: L1 is adjust water column length, 100mm is for one grade, N is the column numbers.

## OUTLET FLANGE SIZE

DIA	DN	PN1.0MPa			PN1.6MPa			PN2.5MPa		
		D4	D5	n-d	D4	D5	n-d	D4	D5	n-d
200	φ200	φ295	φ340	8-φ22	φ295	φ340	12-φ22	φ310	φ360	12-φ26
250	φ250	φ350	φ395	12-φ22	φ355	φ405	12-φ26	φ370	φ425	12-φ30
300	φ300	φ400	φ445	12-φ22	φ410	φ460	12-φ26	φ430	φ485	16-φ30
350	φ350	φ460	φ505	16-φ22	φ470	φ520	16-φ26	φ490	φ555	16-φ33
400	φ400	φ515	φ565	16-φ26	φ525	φ580	16-φ30	φ550	φ620	16-φ36
450	φ450	φ565	φ615	20-φ26	φ585	φ640	20-φ30	φ600	φ670	20-φ36
500	φ500	φ620	φ670	20-φ26	φ650	φ715	20-φ33	φ660	φ730	20-φ36
600	φ600	φ725	φ780	20-φ30	φ770	φ840	20-φ36	φ770	φ845	20-φ39
700	φ700	φ840	φ895	24-φ30	φ840	φ910	24-φ36	φ875	φ960	24-φ42
800	φ800	φ950	φ1015	24-φ33	φ950	φ1025	24-φ39	φ990	φ1085	24-φ48
900	φ900	φ1050	φ1115	28-φ33	φ1050	φ1125	28-φ39	φ1090	φ1185	28-φ48
1000	φ1000	φ1160	φ1230	28-φ36	φ1170	φ1255	28-φ42	φ1210	φ1320	28-φ55

Remark: Except special request, pump is designed by the below pressure standard, same as order.

If head is ≤100m, outlet flange class is PN1.0MPa.

If head is >100~160m, outlet flange class is PN1.6MPa.

If head is >160~250m, outlet flange class is PN2.5MPa.

## PRESSURE & CAPACITY OF LUBRICATION WATER

Model NO	Lubrication water pressure (MPa)	Lubrication water pressure (m <sup>3</sup> /h)
200SLLC-19、19A、19E、19F、19FA、 25、25E、25F	0.2~0.3	0.8~1.0
200SLLC2-38、38E、38F、50、50E、 50F	0.4~0.5	
200SLLC3-75、75E、75F	0.6~0.7	
200SLLC4-100、100E、100F	0.9~1.0	1.2~1.4
200SLLC5-125、125E、125F	1.1~1.2	
200SLLC6-150、150E、150F	1.4~1.5	
250SLLC-10、250SLLC-14	0.2~0.3	
250SLLC-20、20A		
250SLLC2-40, 250SLLC-32、32A	0.3~0.4	
250SLLC2-64、64A	0.5~0.6	
250SLLC3-96、96A	0.8~0.9	
250SLLC4-128、128A	1.1~1.2	1.8~2.2
250SLLC5-160	1.5~1.6	
300SLLC-10、14	0.2~0.3	1.2~1.4
300SLLC-25、25A		
300SLLC-33	0.4~0.5	
300SLLC-42、42A, 300SLLC2-50		
300SLLC2-66		
300SLLC2-84	0.7~0.8	1.8~2.2
300SLLC3-99	0.8~0.9	
300SLLC3-126	1.1~1.2	
300SLLC4-168	1.5~1.6	
300SLLC5-210	1.9~2.0	3.0~4.0
350SLLC-10、14、19、19A	0.2~0.3	1.4~1.6



Model NO	Lubrication water pressure (MPa)	Lubrication water pressure (m <sup>3</sup> /h)
350SLLC-30、30A、30F	0.3~0.4	
350SLLC-40、40A、40F	0.3~0.4	
350SLLC-48、48A、48F	0.4~0.5	1.4~1.6
350SLLC2-60、60F		
350SLLC2-80、80F	0.6~0.7	
350SLLC2-96、96A、96F	0.7~0.8	1.8~2.2
350SLLC3-120、120F	1.0~1.1	
350SLLC3-144、144F	1.2~1.3	
350SLLC4-192、192F	1.7~1.8	3.5~4.5
350SLLC5-240、240F	2.2~2.3	
400SLLC-10、14、19、19A、19F、25、25A、25F	0.2~0.3	
400SLLC-39、39A、39B、39F	0.4~0.5	1.4~1.6
400SLLC2-50、50A、50F		
400SLLC-62、62A、62B、62F	0.5~0.6	
400SLLC2-78、78A、78F	0.6~0.7	2.0~2.5
400SLLC2-124、124A、124F	1.0~1.1	
400SLLC3-186、186A、186F	1.6~1.7	3.5~4.5
400SLLC4-248、248A、248F	2.3~2.4	
450SLLC-18、18A	0.3~0.4	1.6~1.8
450SLLC-28、28A、28B		
450SLLC-44、44A、44B,		
450SLLC2-56、56A	0.4~0.5	
450SLLC2-88、88A、88B	0.7~0.8	2.2~2.6
450SLLC3-132、132A、132B	1.1~1.2	
450SLLC4-176、176A、176B	1.5~1.6	3.5~4.5
450SLLC5-220、220A、220B	2.0~2.1	
500SLLC-20、20A、20F、23	0.2~0.3	1.8~2.0

<b>Model NO</b>	<b>Lubrication water pressure (MPa)</b>	<b>Lubrication water pressure (m<sup>3</sup>/h)</b>
500SLLC-31、31A、31B、31F	0.3~0.4	
500SLLC-50、50A、50B、50F	0.4~0.5	
500SLLC2-63、63A、63F	0.4~0.5	2.5~3.0
500SLLC2-100、100A、100B、100F	0.8~0.9	
500SLLC3-150、150A、150B、150F	1.3~1.4	3.5~4.5
500SLLC4-200、200A、200B、200F	1.8~1.9	
600SLLC-25、25A、25F	0.2~0.3	1.8~2.0
600SLLC-39、39A、39B、39F	0.3~0.4	
600SLLC-62、62A、62B、62F	0.5~0.6	
600SLLC2-78、78A、78F	0.6~0.7	2.5~3.0
600SLLC2-124、124A、124B、124F	1.0~1.1	
600SLLC3-186、186A、186B、186F	1.6~1.7	3.5~4.5
700SLLC-20、20A	0.2~0.3	2.2~2.6
700SLLC-32、32A、32B	0.3~0.4	
700SLLC-50、50A、50B	0.4~0.5	
700SLLC2-64、64A	0.5~0.6	
700SLLC2-100、100A、100B	0.8~0.9	3.0~3.5
700SLLC3-150、150A、150B	1.3~1.4	4.0~5.0
800SLLC-24、24A	0.2~0.3	2.2~2.6
800SLLC-38、38A、38B	0.3~0.4	
800SLLC-60、60A、60B	0.5~0.6	
800SLLC2-76、76A	0.6~0.7	
800SLLC2-120、120A、120B	1.0~1.1	3.5~4.0
800SLLC3-180、180A、180B	1.6~1.7	4.5~5.5
900SLLC-21、21A、21F	0.2~0.3	2.6~2.8
900SLLC-33、33A、33B、33F	0.3~0.4	
900SLLC-52、52A、52B、52F	0.4~0.5	
900SLLC2-66、66A、66F	0.5~0.6	

<b>Model NO</b>	<b>Lubrication water pressure (MPa)</b>	<b>Lubrication water pressure (m<sup>3</sup>/h)</b>
900SLLC2-104、104A、104B、104F	0.8~0.9	3.0~3.5
900SLLC3-156、156A、156B、156F	1.3~1.4	4.0~5.0
1000SLLC-25、25A	0.2~0.3	2.6~2.8
1000SLLC-39、39A、39B	0.3~0.4	2.6~2.8
1000SLLC-63、63A、63B	0.5~0.6	
1000SLLC2-78、78A	0.6~0.7	3.0~3.5
1000SLLC2-126、126A	1.0~1.1	3.5~4.0
1000SLLC3-189、189A、189B	1.7~1.8	4.5~5.5